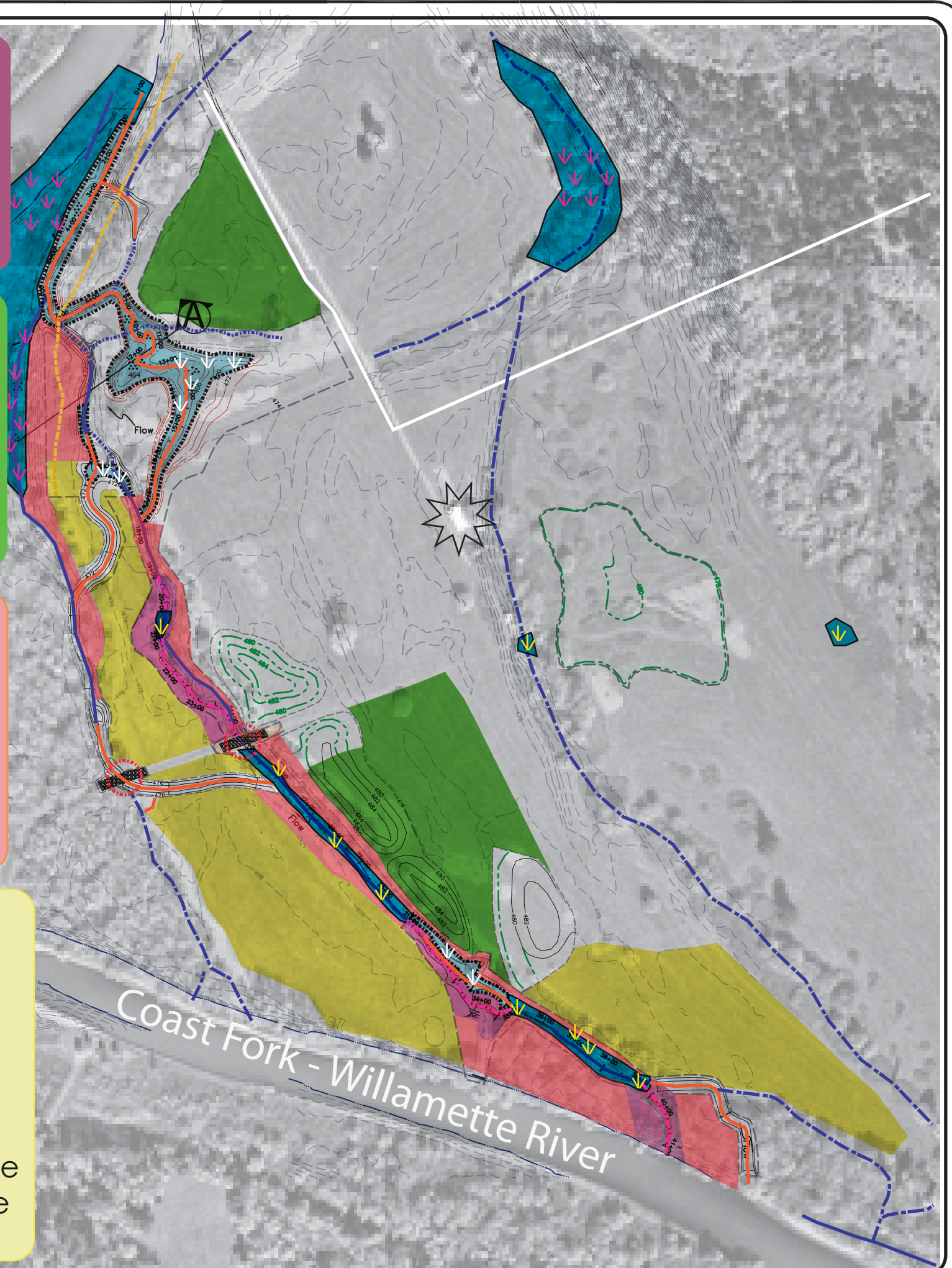


Measure #1,
4.5 acres:
Increase the
frequency and
duration of side
channel flows

















Measure #2,
10 acres:
Use displaced
soils to restore
prairie and
create turtle
nesting habitat

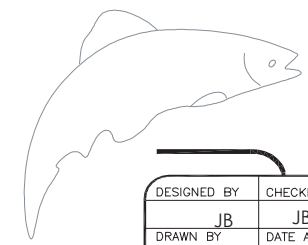
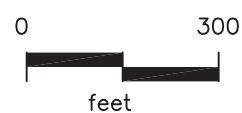
Measure #3,
8 acres:
Control invasive
vegetation to
improve habitat
quality for OCS
key species

Measure #4,
16 acres:
Cultivate native
herbaceous
vegetation in
understory of
reforestation
areas to enhance
habitat & reduce
maintenance



LEGEND:

-  Phase I+II : ≈ 2.50 acres
Expanded aquatic habitat,
excavation complete fall 2003 & fall 2006
-  Phase III: ≈ 4.5 acres, area of channel modification
-  Invasive vegetation control area: ≈ 8.0 acres
-  Created upland oak savanna: ≈ 10.0 acres
(area for placement of displaced soils)
-  Enhanced reforestation area: ≈ 16.0 acres
-  Existing aquatic habitat
-  Existing NWI wetland
-  Existing channel flows 10+ days/year
following project implementation
-  Phase III: Excavated channel - created to
protect habitat & increase flows 25 days/year
-  Phase I+II: Excavated channel
-  Existing channels active at a 2 year flood
-  Existing channels active at a 5 year flood
-  McCulley right bank - ACOE revetment
-  Mt. Pisgah Arboretum lease boundary
-  Staging area & maintenance garage (existing)
-  At grade armored crossing



Floodplain Hydrology Restoration Measures
South Meadow

Howard Buford Recreation Area
Lane County Parks Division

PHASE III Site Plan

Site plan reflects guidance from
ODFW fish biologists, regulatory staff,
Interfluve, FBP staff & volunteers

DESIGNED BY	CHECKED BY
JB	JB
DRAWN BY	DATE APPD.
JB	10-10-07

0