



Friends of Buford Park & Mt. Pisgah is Tackling Tough Weeds: False Brome

Lane County's Buford Park is a 2,363-acre natural area of regional significance. Its "globally endangered" plant communities provide spectacular wildflower displays and support a diversity of birds and other wildlife for visitors to enjoy. The pristine beauty and ecological function of Mt. Pisgah is being threatened, however, by an invasive plant: False Brome.

Friends of Buford Park is leading a park wide effort to control this invasive grass and restore native grasses and wildflowers for future generations.

What's at Stake

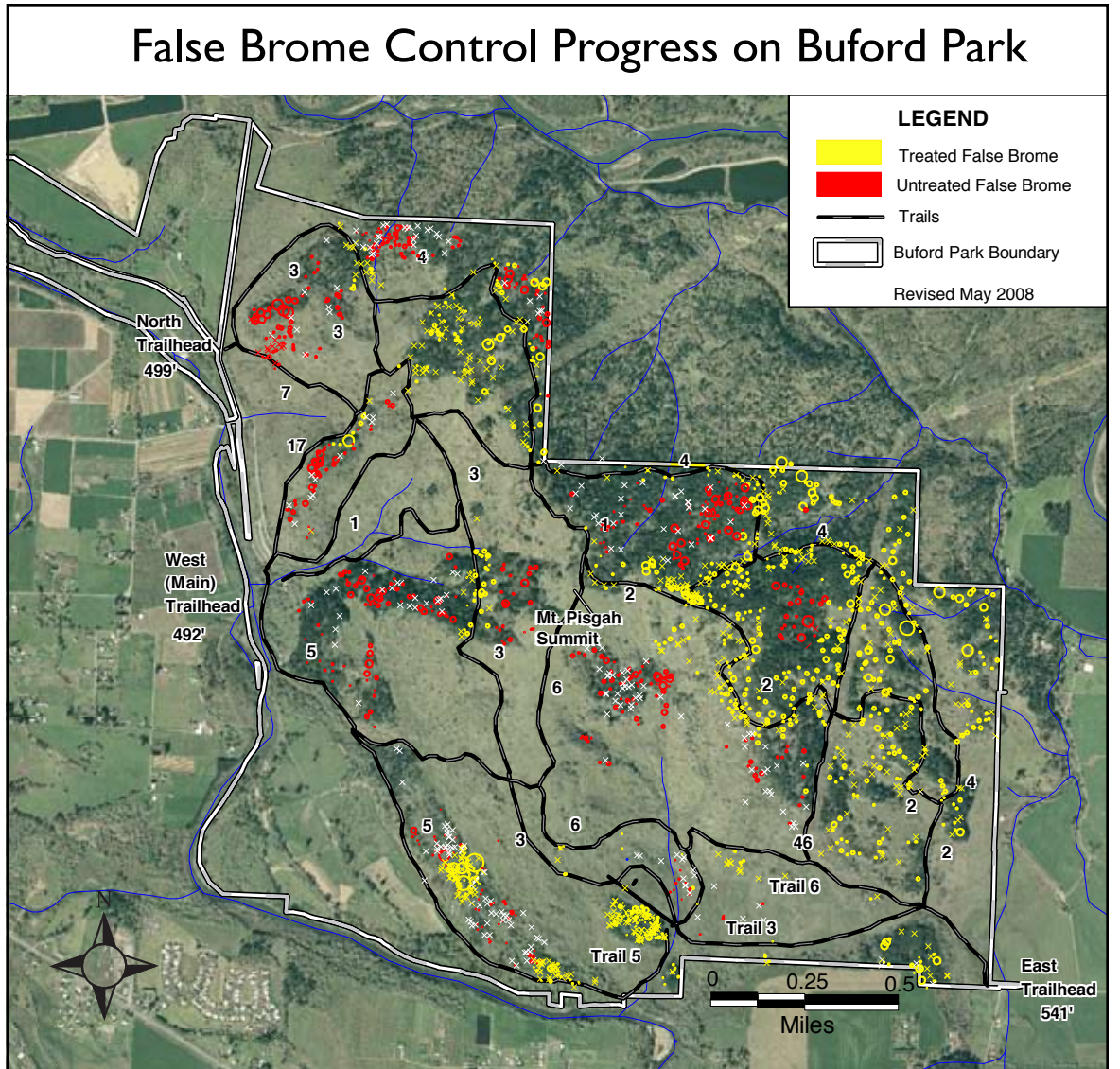
Since first detected on Mt. Pisgah around 1990, false brome has spread across about 1000 acres, primarily in the understory of oak and conifer forests on the north and east sides of the mountain (see map). False Brome is one of the greatest threats to what people love about Mt. Pisgah: native plants and wildflowers and the wildlife that depend on them.

Some of the species most threatened by the false brome invasion include:

- Columbia brome
- Miner's lettuce
- Phantom orchid
- Taylor's checkerspot butterfly
- Balsamroot



False Brome
(*Brachypodium Sylvaticum*)



What We Are Doing

Friends of Buford Park began strategic treatments to control false brome at Buford Park in 2006. We are currently controlling this weed using four treatment methods, depending on site conditions. These include:

- Hand pulling
- Mowing prior to seed maturation
- Limited, careful application of herbicide (glyphosate)
- Post control seeding with native plants

What You Can Do

Reduce the spread of invasives. Stay on trails. Brush seeds off your clothing, shoes and pets before entering and leaving the park.

Join our efforts. Contact Friends of Buford Park & Mt. Pisgah at 541-344-8350, or volunteers@bufordpark.org.



Friends of Buford Park & Mt. Pisgah has been protecting and enhancing native ecosystems and compatible recreation in the Mt. Pisgah area since 1989. We appreciate these agencies' support of our false brome control efforts.

